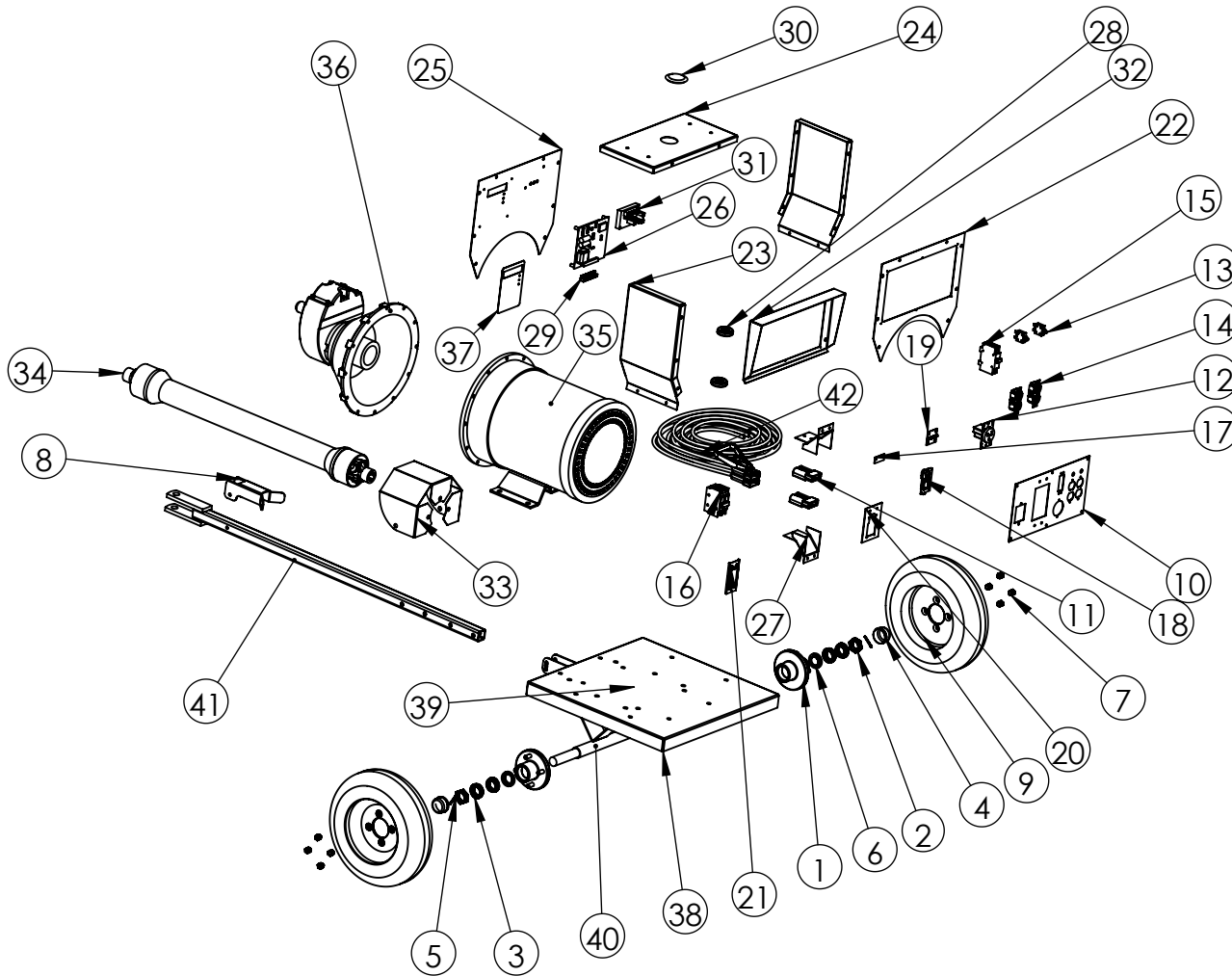


# QC19 Generator



ITEM NO.	PART NUMBER	DESCRIPTION	QTY.
1	G2034	4 Bolt Hub	2
2	G2020	Spindle Nut	2
3	G2023	Tapered Hub Bearing	4
4	G2022	Dust Cap	2
5	G2019	Spindle Pin	2
6	G2021	Grease Seal	2
7	G2018	Wheel Nut	8
8	G2030	30KW PTO Support	1
9	G2017	Tire & Rim 16"	2
10	G2051	QC19 Panel	1
11	E2010	175 AMP And. Connector	2
12	E2001	Welder Receptical	1
13	E2000	20A Switch	2
14	E2004	Duplex Receptical	2
15	E2005	50 Amp Breaker	1
16	E2016	90 Amp Breaker	1
17	G2048	Space Plate	1
18	G2013	Mini-Lock	1
19	G2012	Mini Stainless Hinge	1
20	G2015	Hinge Mount	1
21	G2007	2 Pole Mounting Plate CH	1
22	G2052	QC30 Back Panel	1
23	G2055	QC30-2 Side Panel	2
24	G2054	QC30 Top Panel	1
25	G2053	QC30 Front Panel	1
26	E2017	Display Master 1	1
27	G2059	175 AMP Aderson Bracket	2
28	E2019	300-5 CT	2
29	E2018	Plug	1
30	G2060	Plastic Cap	1
31	E2020	Voltage Regulator	1
32	G2068	QC30 Rain Cover	1
33	G2077	30 KW A PTO Gaurd	1
34	G2011	540 RPM 30KW PTO	1
35	E2043	Generator QC19	1
36	G2061	540 RPM 30 Kw OMNI	1
37	E2055	Display Master 1 Sticker	1
38	G2079	30KW Trailer	1
39	G2036	30KW Trailer Deck	1
40	G2035	30KW Trailer Axel	1
41	G2037	30KW Tounge	1
42	E2047	10 Foot #4 Cord Kit	1

**PROPRIETARY AND CONFIDENTIAL**  
 THE INFORMATION CONTAINED IN THIS DRAWING IS THE SOLE PROPERTY OF BAUMALIGHT. ANY REPRODUCTION IN PART OR AS A WHOLE WITHOUT THE WRITTEN PERMISSION OF BAUMALIGHT IS PROHIBITED.

Please Specify Serial # When Ordering Parts



MTB MFG INC.  
 4575 Powel Rd. Tel:(519)698-9864  
 RR# 1, Wallenstein Fax:(519)698-1087  
 ON, N0B 2S0 Email:menno@mtbmfg.ca  
 Web:www.mtbfmg.ca