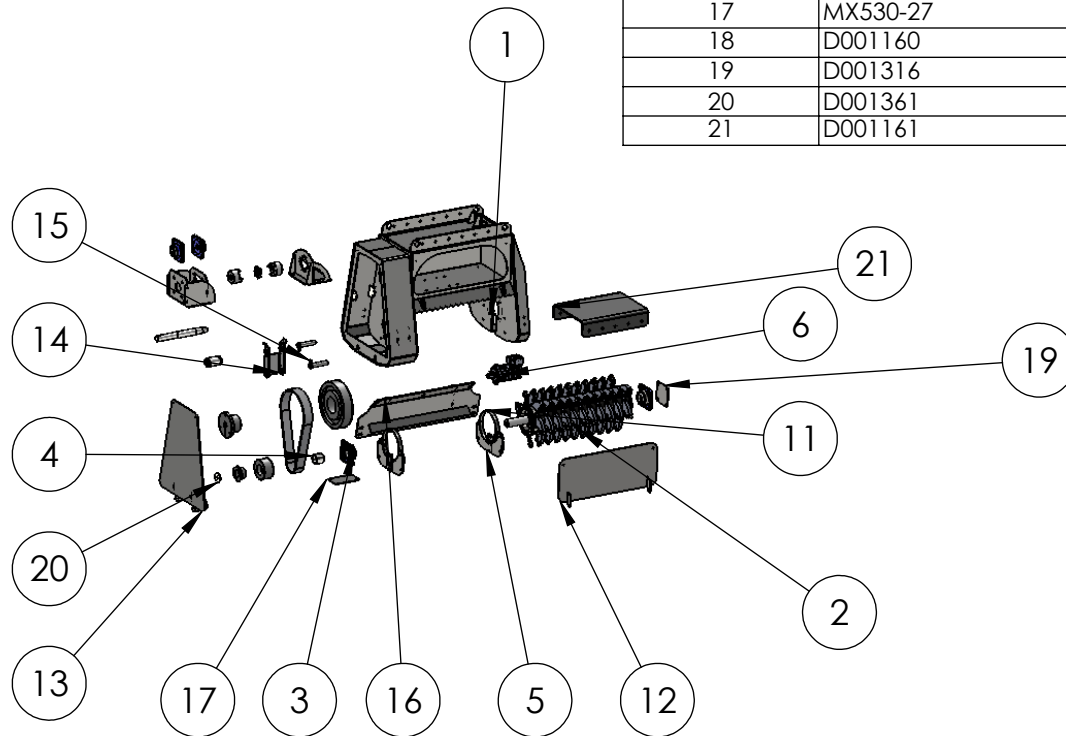


ITEM NO.	PART NUMBER	DESCRIPTION	Default/QTY.
1	D001298	Main Frame	1
2	D001299	30" Rotor	1
3	B2005	4 Blot 210 Flange Green Cast	2
4	D001085	Hub Spacer (formerly M1008)	1
5	D001300	Wire Gaurd Holder	2
6	A450	A Mount Low Speed Motor Mount	1
7	B550	B550 Motor Option for MF548	1
8	C530	C Mount High Speed mount	1
9	C550	C Mount High Speed Motor	1
10	C570	C Mount High Speed mount	1
11	D001112	1" wire guard pipe for 48" drum	2
12	D001301	Motor access door	1
13	D001306	Belt access door	1
14	D001002	Belt tightner	1
15	D001028	Front mount 1" pin	2
16	D001307	removable door	1
17	MX530-27	Bottom belt cover plate	1
18	D001160	Hose Clamp Plate	1
19	D001316	bearing closer	1
20	D001361	Rotor shaft washer	1
21	D001161	Blank mounting plate	1



PROPRIETARY AND CONFIDENTIAL
 THE INFORMATION CONTAINED IN THIS DRAWING IS THE SOLE PROPERTY OF BAUMALIGHT. ANY REPRODUCTION IN PART OR AS A WHOLE WITHOUT THE WRITTEN PERMISSION OF BAUMALIGHT IS PROHIBITED.



Description

30" Mulcher

Weight
1564.2243lbs.

DATE
10/16/2009

DWG. NO.
MX530

REV
A

DO NOT SCALE DRAWING

SCALE: 1:50

SHEET 1 OF 1