



Stump Grinder

Model 3P24/3P34



Operator Manual

Stump Grinder

Operator MANUAL

Models 3P24 & 3P34

**Please Read Entire Manual
Before Operation**

Stump Grinder Operator Manual
Model 3P24 & 3P34
Version 2.0 | September 2008



MTB MFG Inc.
4575 Powell Rd.
RR #1 Wallenstein, ON
N0B 2S0
Phone: (519) 698-9864
Fax: (519) 698-1087
www.baumalight.com
Email: sales@baumalight.com



© 2008 MTB MFG Inc. All Rights Reserved. Information in this manual is subject to change without notice. Information found in this manual may not be reproduced in any form without authorization from MTB MFG Inc.

Table of Contents

| | |
|---|-----------|
| About this manual | 1 |
| Navigation Aids | 2 |
| Orientation..... | 2 |
| About the BAUMAlight Stump Grinder | 3 |
| Model 3P24 | 3 |
| Model 3P34 | 3 |
| S1050 Valve (optional)..... | 4 |
| A bit about teeth | 4 |
| Safety Precautions | 6 |
| How does it work? | 8 |
| Dealer preparations | 9 |
| Unpacking the Stump Grinder..... | 9 |
| Attaching the drive shaft | 12 |
| Operating the stump grinder | 14 |
| Pre-Operation Checklist..... | 14 |
| Tips for First Time Users..... | 15 |
| Connecting the Stump Grinder to the tractor | 16 |
| Traveling to the location of the stump | 19 |
| Adjusting the swing speed of the grinder | 19 |
| Breaking in the Carbide Teeth | 19 |
| Removing a stump | 21 |
| Stopping the Stump Grinder | 24 |
| Maintaining the stump grinder | 25 |
| Regular maintenance..... | 25 |
| Location of Pivot Pins | 26 |
| Troubleshooting | 27 |
| Warranty information | 29 |
| Purchase information for warranty | 31 |

About this manual

This manual provides information about the operation and maintenance for the BAUMAlight Stump Grinder, models 3P24 and 3P34. It contains the following sections:

About the BAUMAlight Stump Grinder

This section provides information about the two models described in this manual, 3P24 and 3P34.

Safety Precautions

This section describes standard safety precautions that should be observed when working around the stump grinder. Never operate the stump grinder until you have read and completely understand this manual and are comfortable working with the controls on the tractor.

How does it work?

This section provides an overview of how the stump grinder works. It is intended as an overview ONLY. For detailed information about using the stump grinder please refer to the section titled: Operating the Stump Grinder.

Dealer preparations

This section describes the process for unpacking and preparing the stump grinder for initial use. This section is relevant primarily to dealers.

Operating the stump grinder

This section describes how to safely operate the stump grinder. It includes information about what to check before you operate the machinery, how to connect the stump grinder to the tractor, tips for first time users, traveling to the location of the stump, removing a stump and stopping the stump grinder.

Maintaining the stump grinder

This section contains information about maintaining your stump grinder to ensure it is safe to operate.

Troubleshooting

Are you having a problem that you can't resolve? Check this section for issues that may help you solve your problem.

Warranty Information

This section describes the warranty that BAUMAlight provides for the stump grinder. It contains a registration card that can be removed from the manual and mailed to the manufacturer to ensure your warranty is valid. Always keep a copy of the Warranty information for your records.

Navigation Aids

Navigation aids are used to identify important information, warnings and helpful hints or tips.

Important information or safety warnings are shown like this:



Read information in red very carefully. Warnings and safety notices are always displayed in red.

A helpful tip is shown like this:

Tip! All cutting is done on the left side of the cutting wheel, not the bottom edge.

Orientation

All directional descriptions mentioned in this manual are based on the view of the stump as the operator is seated on the tractor and looking backward from the tractor seat to face the stump.

About the BAUMAlight Stump Grinder

BAUMAlight Stump Grinders are manufactured in Wallenstein, Ontario, Canada. Their unique design and wide swing area enhances visibility, making the stump grinder easy and efficient to operate.

BAUMAlight's Stump Grinder attaches to your tractor using a 3-point hitch. The rotor or cutting wheel is powered by your tractor's PTO (540) with the swing and lift cylinders activated by either the standard hydraulic remotes on the tractor or the optional S1050 Valve. The stabilizer foot provides a greater level of control.

Model 3P24

The 3P24 Stump Grinder uses a 24" cutting wheel that contains thirty-four teeth. It is designed for use with a 30 to 60 horsepower tractor and can accommodate a category I or II hitch. The optional S1050 Valve provides better feathering control for lower horsepower tractors. If the S1050 Valve option is not installed, the tractor must be equipped with two remotes, one for lift and one for swing.



Model 3P34

The 3P34 Stump Grinder uses a 34" cutting wheel that contains fifty-four teeth. It is designed for use with a 45 to 90 horsepower tractor and uses a category II hitch.



S1050 Valve (optional)

The S1050 valve is an optional extra for tractors operating at the lower range of acceptable horsepower or tractors that are not equipped with two remotes. If the tractor is underpowered, the S1050 valve enables the operator to control the stump grinder more consistently at slower speeds. The S1050 Valve provides better feathering control for lower horsepower tractors.

If a tractor is equipped with only one set of remotes, the S1050 splits the flow into two sets of hoses allowing two controllable functions instead of one. The levers on the S1050 are used to control lift and swing on the stump grinder instead of using the controls on the tractor.



A bit about teeth

Like any good horse trader knows, it's all in the teeth. A stump grinder with heavy tooth population requires less horsepower to operate. When one tooth is closely followed by another, the result is a more controlled cut instead of a smashing effect, ensuring smooth operation with less vibration. The more teeth you have, the less the impact on each tooth.

Like healthy enamel on a horse tooth, angled carbide tips on our stump grinder teeth maximize the life of each tooth. New carbide teeth are razor sharp and can chip and shatter easily when they hit hard objects. During the first few hours of use, keep the cutting wheel above ground level to avoid hitting stones. This allows the teeth to wear slightly. Following this practice will extend the life of the carbide teeth and reduce operating expenses.

Being "long in the tooth" is a good feature with a BAUMAlight Stump Grinder. Each tooth has a 5/8" threaded shaft that bolts into the cutting wheel. The teeth protrude 1-1/4" from the surface of the cutting wheel,

allowing for more effective clearance of chips as the cutting wheel passes across the stump.

Safety Precautions

REMEMBER: SAFETY FIRST!!

This manual emphasizes the safety precautions to observe during the setup, operation and maintenance of your BAUMALight Stump Grinder. Please read all safety instructions included in this manual very carefully before beginning operation.

Each section of this manual contains caution and warning messages. These messages are for your safety and the safety of the equipment involved. If any of the cautions or warnings are not readily understood, seek clarification from qualified personnel before proceeding.

Caution or safety warnings are shown like this:



Read information in red very carefully. Warnings and safety notices are always displayed in red.

Ensure no one is standing in line or close to the cutting wheel as flying chips and rocks can cause serious injury or death.

Always keep children and small animals away from the stump grinder. Never operate with children present.

Do not operate when fatigued or under the influence of alcohol.

Always wear protective face gear and eye protection.

Keep all guards and deflectors in place. If you are cutting close to a building or fence line and must lift the deflector shield ensure there are no observers or animals in the vicinity of the debris field. Debris can fly a long distance and extra care must be taken when the shield is not in place.

Ensure the tractor clutch is disengaged any time you leave the seat of the tractor. NEVER leave the tractor clutch engaged when you are not seated.

The hydraulic system is under significant pressure and hydraulic fluid can be very hot. Ensure hydraulic lines are firmly secured so the lines do not get pinched or punctured during operation.

The cutting teeth are very sharp, use caution when handling. Ensure the tractor PTO is disengaged, the tractor engine has been turned off and all moving parts have stopped before approaching the stump grinder to reposition, adjust or repair.

Visually inspect the unit before each startup. Check for loose or missing parts and any damage that may have occurred during movement or shipping.

Do NOT wear neckties, loose shirts, loose sleeves or any other loose clothing that may become caught in moving parts.

Before any service work is performed, disconnect all power sources and lock out all controls to prevent an unexpected start up of the driver. Proper securing of the cutting wheel and swing frame are mandatory to prevent potential serious personal injury or even death.

Provide adequate ventilation for the tractor, whether it is gasoline or diesel powered.

Excessive noise can lead to loss of hearing. When working around engines use noise suppression equipment and wear protective devices as necessary. The stump grinder can be quite noisy when in use. Please keep your neighbours in mind when noise level is high.



REMEMBER! To avoid risk of accident or injury, please read the entire operator's manual before operating or maintaining the stump grinder.

How does it work?

This section provides an overview of how to operate the stump grinder. THIS IS INTENDED AS AN OVERVIEW ONLY.

For a full description of operating procedures please refer to page 14, *Operating the stump grinder*.

With the stump grinder attached to the tractor hitch, the tractor is backed up to the front edge of the stump to be removed.

The stump grinder is lowered into position on the front right edge of the stump. All cutting is done on the left side of the cutting wheel, not the bottom edge.

Starting at the top right side of the stump, the cutting wheel is moved from right to left in 3 to 6 inch increments depending on the size of the tractor. Larger increments can be handled by a larger tractor.

Multiple passes are made over the front edge of the stump, grinding down 3-6 inches on each pass until the ground is reached.

The tractor is repositioned so the stump grinder is positioned at the new front edge of the stump. Continue making passes over the front edge of the stump.

Reposition the tractor and stump grinder as needed until the entire stump has been removed to below ground level.

If necessary the deflector guard for debris can be moved out of the way if you are working close to a fence or building although extra care must be taken to ensure observers or animals are not in the path of flying debris.

Dealer preparations

The Stump Grinder is carefully inspected and checked prior to shipment from the manufacturer. Check the following items prior to initial use:

Check all bolts for tightness

Ensure all shipping tags, bags, skids, straps and blocking are removed

Check the swing frame to ensure it is free from obstruction and can operate smoothly without binding

Complete parts lists can be found on the website: www.baumalight.com.

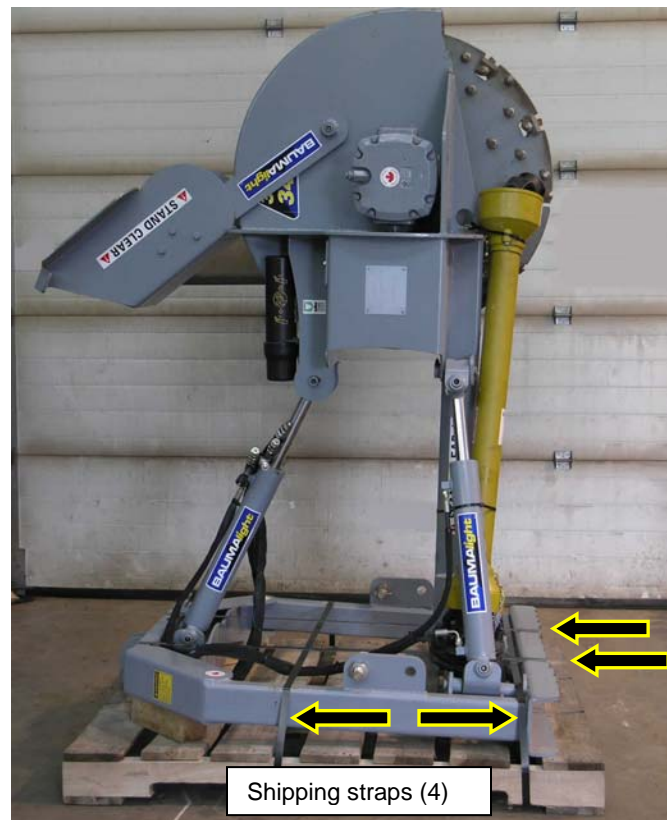
Unpacking the Stump Grinder

The BAUMALight Stump Grinder is shipped from the manufacturer in an upright position, with the back of the A-frame resting on the wooden pallet, as shown in the picture.

As the Stump Grinder is very heavy, an overhead lift is recommended for unloading from the pallet and orienting to a horizontal working position.

Due to the weight of the cutting wheel, the lifting device must be adjusted accordingly to ensure the unit is lowered very carefully.

The job of unpacking and assembling the stump grinder is much easier if there are two people available to assist.

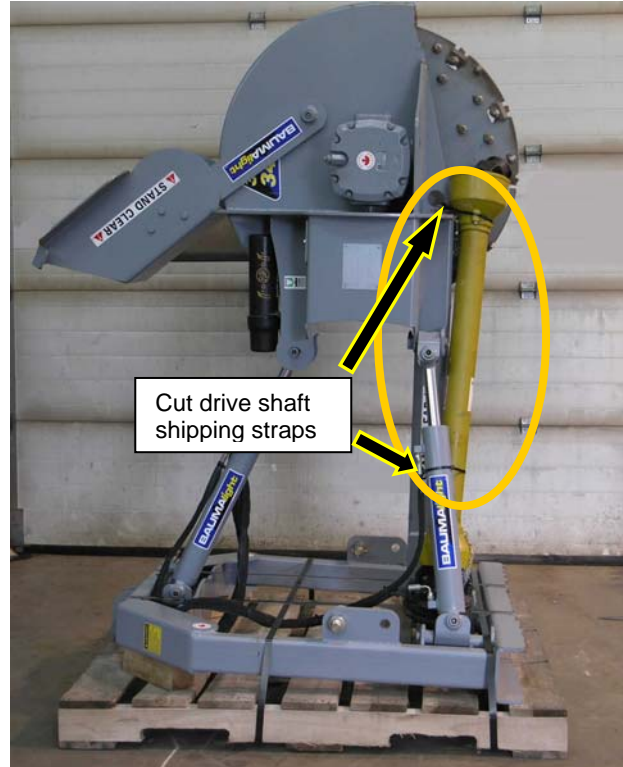


CAUTION! The unit is extremely heavy. Proper safety precautions must be followed at all times to ensure personal

safety.

Follow these steps to unpack the stump grinder:

- 1 Cut the four straps holding the stump grinder to the pallet and discard.
- 2 The drive shaft is shipped disassembled from the stump grinder. Cut the two shipping straps securing the drive shaft for shipping and lower the drive shaft to the ground. Set the shaft a safe distance away from the stump grinder and discard the shipping straps. You will need room to move the stump grinder from the upright position.



CAUTION! The drive shaft is very heavy, use safe handling precautions!

- 3 Using an overhead lift, insert the lifting hook into the lifting eye on the frame of the stump grinder.
- 4 Slowly lift the weight of the stump grinder off the pallet. When the unit is clear of the pallet, remove the pallet and move it well away from the unit.





CAUTION: As the weight is taken by the lift, the unit will tip sideways, ready for orienting to the operating position. Ensure all operators are aware of this change in orientation and take appropriate precautions for their personal safety

- 5 Using the overhead lift, gently lower the unit to the ground in the operating position. The bottom of the A-frame stabilizing foot should be resting on the ground.
- 6 With the stabilizing foot resting on the ground, gently lower the cutting wheel to the ground.
- 7 You are now ready to attach the drive shaft. You can leave the hook to the overhead lift in place in case you need to reposition the unit.



Attaching the drive shaft

The drive shaft for the stump grinder must be attached prior to use. The unit must be resting on the A frame stabilizing foot in the horizontal operating position to install the drive shaft.

To attach the drive shaft, follow these steps:

- 1 Remove the bolts from the plate cover on the frame of the stump grinder, allowing access to the drive shaft.
- 2 Remove the bolt from the end of the drive shaft.



3 Insert the drive shaft into position, locating the shaft on the pins.

4 Reinsert the bolt into the drive shaft and tighten firmly using a wrench.



5 Unhook the overhead lift and move the lift clear of the unit.

6 Replace the shaft plate cover and bolt into place.



The unit is now ready to hook up to a tractor. For more information see page 15, *Connecting to the Tractor*.

Operating the stump grinder

This section provides information about how to operate the stump grinder. Always review the Pre-Operation Checklist before using the machinery to ensure the stump grinder is safe to operate.

Pre-Operation Checklist

Complete this checklist before operating the stump grinder.

| √ | Check these items: | Frequency |
|---|---|------------------|
| | Check the three lynch pins on the hitch to ensure they are securely fastened | Each operation |
| | Check the hydraulic fluid level to ensure there is sufficient fluid in the system | Each operation |
| | Check hydraulic lines for breaks and punctures | Each operation |
| | Ensure hydraulic lines are plugged in securely | Each Operation |
| | Ensure hydraulic lines are tied well away and cannot bind or be pinched | Each operation |
| | Check the cross bolts that secure the 9 pivot pins | Each operation |
| | Ensure the pins on each end of the drive shaft are secured | Each operation |
| | Ensure the safety chains on the drive shaft are securely attached to the cover | Each operation |
| | Check the cutting tips on the cutting wheel to ensure they are tight | Every 4 hours |
| | Grease all 9 pivot pins plus the 2 pins on the deflector shield | Every 8 hours |
| | Check the oil in the stump grinder's gearbox. For type and quantity refer to the maintenance chart in the Regular Maintenance section, page 25. | Every 200 hours |

Tips for First Time Users

This section contains tips that will be helpful for those who are using the stump grinder for the first time. This section should also be reviewed by seasoned users to ensure that unsafe habits do not develop. A short video is provided on the MTB Mfg. Inc website that is recommended viewing before using the stump grinder. Go to <http://www.baumalight.com> then click on *Videos*.

Review the *Safety Precautions* listed on page 6 and double check the *Pre-Operation Checklist* on page 14 before proceeding.

Before you begin, ensure the tractor is turned off and the PTO drive is disengaged.

Stand to the side of the stump grinder and observe the centre point on the bottom of the cutting wheel. Now sit on the tractor seat and observe the centre point again. This point will appear different depending on where you are positioned. This can be very deceiving! Familiarize yourself with the view of the stump grinder from the tractor seat.

Test all operating functions in an open area with the tractor at idle speed to get a feel for the controls. Take your time.

Start with a small stump. Make the first pass then disengage the PTO drive and get off the tractor to see how much you have removed.

Get off the tractor after each pass to check the progress. The cutting wheel is shielded from view when sitting on the tractor seat so it is difficult to accurately determine the progress. The ability to judge the positioning improves with practice. Do not expect to get the first stump done quickly.



ALWAYS TURN OFF THE TRACTOR AND DISENGAGE THE PTO DRIVE BEFORE GETTING OFF THE SEAT AND APPROACHING THE CUTTING WHEEL.

Connecting the Stump Grinder to the tractor

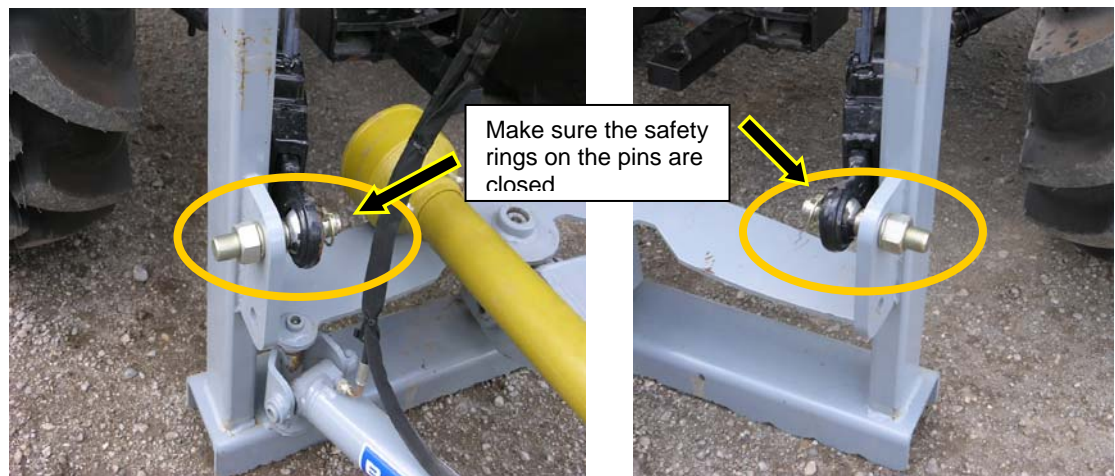
Before backing the tractor into position to attach the stump grinder, make sure there is enough space in the area around the stump grinder to maneuver the tractor. If possible arrange for a second person to assist with attaching the hitch.



IMPORTANT: Please read all safety precautions on page 6 before proceeding!

To attach the stump grinder to the tractor, follow these steps:

- 1 Lower the deflector shield on the stump grinder.
- 2 Back the tractor into position in front of the grinder.
- 3 Hook up the two lower links of the 3-point hitch and attach with lynch pins to hold in place. Ensure the safety rings on the pins are closed.



- Hook up the hydraulic lines as per your tractor's specifications. If necessary, adjust the cylinder to find the correct position to attach the



top link of the hitch.



- Hook up the top link of the 3-point hitch and attach with a lynch pin to hold in place. Ensure the safety ring on the pin is closed.

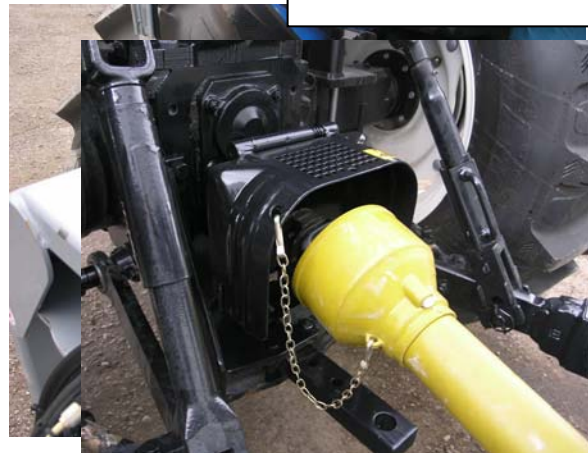


The A-frame of the stump grinder should be vertical for safe operation. If necessary adjust the angle of the A-frame

by adjusting the top link of the hitch.

Make sure the safety ring on the pin is closed

- Attach the drive shaft to the tractor and lock into place.



- 7 Attach the two sets of safety chains on the drive shaft safety cover to ensure the cover cannot rotate.



- 8 If still intact, remove the factory strapping on the hydraulic lines. This is typically one cable tie holding all the lines together.
- 9 Using a cable tie, secure the hydraulic cables to the top bar of the hitch, out of the way of the drive shaft to prevent the cables from binding or pinching.
- 10 Review the *Pre-Operation Checklist* on page 14 to ensure all checks have been completed.

You are now ready to use the stump grinder.



Traveling to the location of the stump

Whenever you need to move the tractor with the stump grinder attached, always centre the grinder directly behind the tractor for greater stability.

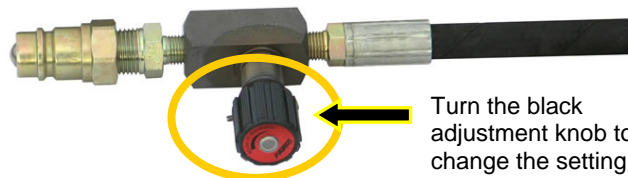
Ensure the PTO drive is disengaged to stop the cutting wheel from rotating during travel.

Always follow Ministry of Transportation rules and regulations when traveling on public roads. Ensure a slow moving vehicle sign is visible to other drivers and use four-way flashers where possible.

Adjusting the swing speed of the grinder

The SWING speed of the grinder can be adjusted by turning the adjustment knob on the flow control valve.

To adjust the speed of the grinder to the slowest setting, turn the adjustment knob until 1 is visible on the white stalk in the centre of the knob. As you turn the knob, the stalk moves from 1 to 4, with 1 being the slowest speed and 4 the highest speed. We recommend starting at 1, the slowest speed.



Turn the black adjustment knob to change the setting from 1 to 4

Breaking in the Carbide Teeth

During the first few hours of use, avoid hitting stones as much as possible to allow the carbide teeth to wear slightly. This can be done by keeping the cutting wheel above ground level.

Brand new carbide tips are razor sharp and can chip and shatter easily when they hit hard objects. Once the razor sharpness has worn away, the tips do not chip as easily.

Observing these precautions will extend the life of the carbide teeth and reduce operating expenses.

Removing a stump

Before beginning operation of the stump grinder, please review the *Pre-Operation Checklist* on page 14 to ensure all checks have been completed.

Review ALL safety precautions on page 6.

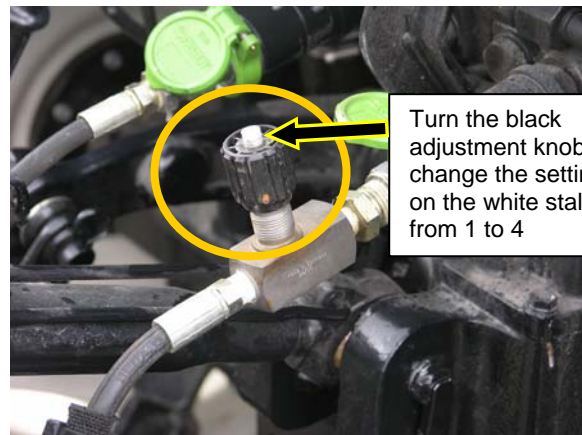
Review *Tips for First Time Users*, page 15 for some helpful tips to newcomers and seasoned customers alike.

Follow these steps to grind out a stump:

- 1 Ensure the stump grinder is hooked up to the tractor hitch following the steps in *Connecting the Stump Grinder to the tractor*, page 16. Ensure all lynch pins are firmly secured.

- 2 Turn the knob on the flow control valve until 1 is visible. This is the slowest setting.

As you turn the knob, the stalk on the flow control valve moves from 1 to 4, with 1 being the slowest speed and 4 the highest speed. We recommend starting at 1, the slowest speed.



Turn the black adjustment knob to change the setting on the white stalk from 1 to 4

- 3 Turn around on the seat of the tractor and face the stump. Using the tractor's hydraulics, swing the stump grinder fully to the right.

Tip! All directional descriptions are based on the operator sitting on the tractor seat and looking backward to face the stump.
All cutting is done on the left side of the cutting wheel, not the bottom edge.

- 4 Back the tractor up to the front edge of the stump (the edge that is closest to the tractor). Lower the foot of the A-frame on the stump grinder to rest squarely on the ground.



Tip! If the area where the stump is located is on a grade try to position the tractor lower on the grade with the cutting wheel on the stump grinder higher up the grade. This uses the weight advantage to provide more stable cutting.

- 5 Turn off the tractor, get off the seat and check the position of the stump grinder to the stump. Ensure the grinder is positioned at the edge of the stump that is closest to the tractor.

CAUTION! Ensure the PTO drive is disengaged and the cutting wheel has stopped moving before approaching the stump grinder.

If you are working close to a fence or building, the deflector guard that directs debris can be moved out of the way.



Be aware that debris can travel a long distance without the guard in place. Use ultimate caution if you choose to reposition the guard.

- 6 Get back on the tractor and turn it on. Engage the PTO drive. If the tractor is equipped with two remotes, use these levers to control lift and swing. If the stump grinder is equipped with the optional S1050 valve, use the levers on the valve to control lift and swing.
- 7 Using the lift and swing levers to direct the stump grinder, make the first pass across the front edge of the stump, moving the cutting wheel from right to left in 3 to 6 inch bites. The size of the bite will depend on the power and size of the tractor. Larger bites can be handled by a larger tractor. Return the grinder to the far right after each pass.
- 8 Continue to take passes across the front edge of the stump, taking 3-6 inch bites on each pass.



Tip! Get off the tractor after a few passes to note the progress.

REMEMBER! ALWAYS DISENGAGE THE PTO DRIVE AND WAIT FOR THE CUTTING WHEEL TO STOP MOVING BEFORE APPROACHING THE STUMP GRINDER.

- 9 When ground level is reached, continue to grind 3 – 6” below the surface to the bottom of the stump where the roots branch out.
- 10 Lift the stump grinder and swing it to the far right. Back the tractor up slightly to position the stump grinder beside the new front edge of the stump.
- 11 Make multiple passes over the front edge of the stump, taking 3-6 inch bites on each pass.

- 12** Reposition the tractor and stump grinder as needed until the entire stump has been removed to below ground level.
- 13** Follow the roots, taking as much of the larger surface roots as possible. If these are not removed they can, over time, protrude from the ground in areas where there is a heavy freeze/thaw cycle.

Stopping the Stump Grinder

The stump grinder is controlled by the PTO drive on the tractor.

To stop the stump grinder, follow these steps:

- 1** Throttle down to the slowest speed of the tractor.
- 2** Disengage or turn off the PTO drive.
- 3** Turn off the tractor.



ALWAYS WAIT FOR THE CUTTING WHEEL TO STOP MOVING BEFORE APPROACHING THE STUMP GRINDER.

You are now clear to work around the stump grinder.

Maintaining the stump grinder

This section provides information about maintaining your stump grinder.
Complete parts lists are available on the website at: www.baumalight.com

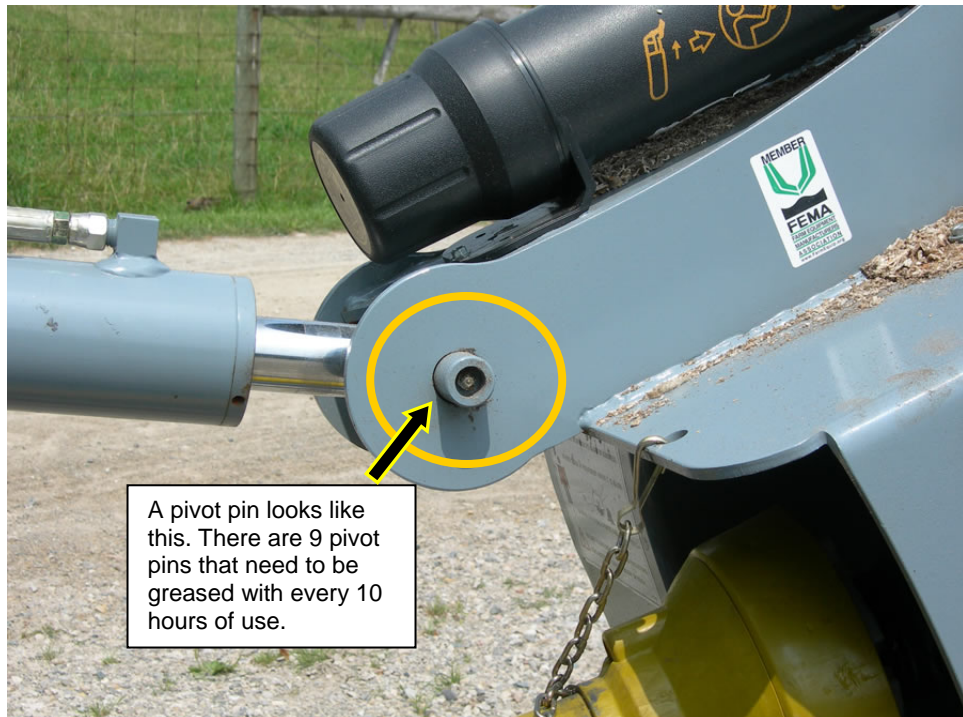
Regular maintenance

Regular maintenance is important to ensure your stump grinder works well and is safe to use.

| Item: | Do this maintenance: | How often: |
|--------------------------------|---|--------------------------------------|
| General inspection | Inspect the unit for any buildup of contamination (such as dirt, stones, etc.) | Prior to every use |
| Hydraulics | Check hydraulics for leaks, punctures | Prior to every use |
| Cutting teeth | Check and replace one at a time as necessary. The teeth on the outer edge of the wheel wear faster and are more prone to chipping. With average use expect to replace 5 to 10 teeth a year. | Every 4 hours of use |
| Deflector shield pins | Grease deflector shield pins to ensure the shield can move freely. | Every 6 hours of use |
| Pivot pins | Grease 9 pivot pins | Every 10 hours of use |
| Gearbox oil | Change the oil in the gearbox, Type: synthetic 90 gear oil Quantity: 1/1/2 litres | Every 200 hours of use or every year |
| Big nut on cutting wheel shaft | If the wheel is replaced, the torque setting is 130-140 ft-lbs. | Only during replacement of the wheel |

Location of Pivot Pins

There are 9 pivot pins on the stump grinder. These pivot pins must be greased with every 10 hours of use. A pivot pin looks like this:



Troubleshooting

| If this happens: | Do this: |
|---|--|
| Cutting wheel does not spin | <p>Make sure the PTO shaft is connected correctly.</p> <p>Make sure the slip clutch is not slipping.</p> |
| Cutting wheel does not have much torque | <ol style="list-style-type: none"> 1) Check to determine if the slip clutch is hot. Use Caution: This Can Be Very Hot! If the slip clutch is hot, cool it right down with water. A hot clutch does NOT grip. 2) Slippage on the clutch occurs if there is more power than the unit is rated for: <ul style="list-style-type: none"> Model 3P24 is rated for 20-60 hp input Model 3P34 is rated for 50-90hp input <p>A bigger tractor can be used if it is idled down as this will decrease the output power of the engine.</p> 3) Take smaller passes (less cutting) to decrease the strain on the clutch. 4) Turn the flow control knob to a lower number (1) to reduce the strain on the slip clutch. <p>Be careful when tightening the tension setting on the slip clutch as this could put excess strain on the gearbox.</p> |
| Tractor is not able to lift the 3-point | <p>This can occur if the tractor is small. Check that the link pins are in the top position on the stump grinder to add leverage.</p> |
| Cutting wheel cannot be lifted high enough | <ol style="list-style-type: none"> 1) Shorten the top link on the three point hitch. 2) Cut the stump shorter |
| Cutting wheel cannot be lowered far enough | <p>Lengthen the top link on the three point hitch</p> |
| No movement on cylinders | <ol style="list-style-type: none"> 1) Check the lines are plugged in and not crossed. 2) Check the adjustment valve to see if it is closed all the way down. If so, open the valve. |

Warranty information

This product is warranted to be free of defects in materials and workmanship under normal use and service, for a period of one year from the date of purchase, when operated and maintained in accordance with the Operating and Maintenance Instructions supplied with this unit. This warranty does not cover misuse or negligence. This warranty does not cover normal wearing of parts.

Under no circumstances will the manufacturer be liable for any consequential damage or expense of any kind, including loss of profits. The manufacturer is under no circumstances liable for tractor damage of any kind. The manufacturer is not liable for the maintenance of the product.

This warranty is extended only to the original purchaser. Warranty is void if repairs are attempted by anyone other than an Authorized Service Centre.

If a difficulty develops with the product, you should contact your nearest Authorized Repair Centre, or distributor. Only these locations are authorized to make repairs to the product or affect the replacement of defective parts, which will be done at no charge within a reasonable time after the receipt of the product. Units or parts should be returned at the customer's expense to the nearest repair location or Authorized Service Centre. Pack unit in a strong carton and pad tightly to avoid damage. Damage in-transit is not covered by warranty. Include original purchase receipt with any claim (keeping a copy for your files).

The distributor's liability under warranty is limited to repair of the product and/or replacement of parts and is given to the purchaser in lieu of all other remedies including incidental and consequential charges. There are no warranties, expressed or implied other than those specified herein. For the nearest Authorized Service Centre call the manufacturer.

Please note the following details and file this information in an appropriate place.

Model Number: _____ S/N: _____

Date of Purchase: _____

Owner's Name _____

Purchase information for warranty

Complete this form and mail to the manufacturer. This form must be on file with Baumalight to validate the warranty.

Mail to:

MTB MFG INC.
4575 Powell Rd., RR#1
WALLENSTEIN, ON
N0B 2S0

Warranty Card for Baumalight Stump Grinder

Model Number: _____ S/N: _____ Date of Purchase: _____

Purchased from: _____

Owner's Name: _____

Address: _____

Telephone: _____ Fax: _____

We welcome your feedback! Did this unit replace a smaller machine? Yes No

Do you have any suggestions for improvements in our product or service?

Do you have any comments on our workmanship? _____

Has this manual been helpful? _____ Do you have suggestions for improving the manual?

Mail to:

**MTB MFG INC.
4575 Powell Rd., RR#1
WALLENSTEIN, ON
N0B 2S0**