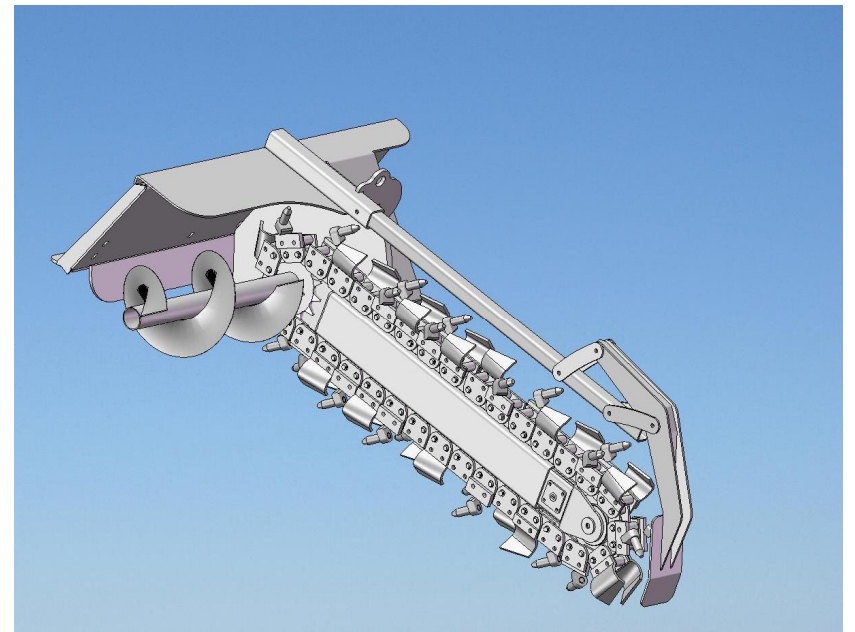
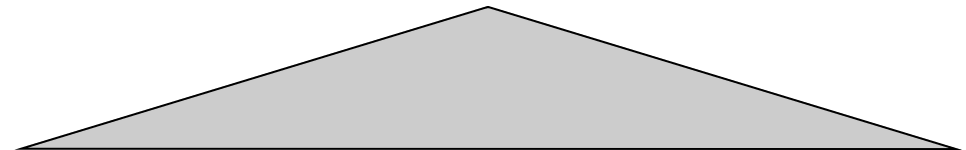


Hydraulic Trencher Owners Manuel



Owner's Manual

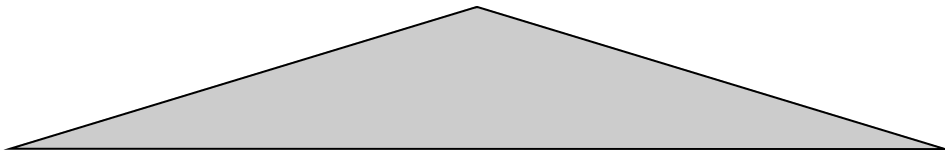


Do not use with more than rated oil flow.

MTB MFG 4575 Powell Rd. RR# 1 Wallenstein Ont. N0B
2S0 Phone (519) 698-9864 Fax (519) 698-1087
E-mail sales@mtbmfg.ca www.mtbmfg.ca

Updated Oct 15 2007

MTB MFG ING
4575 Powell Rd. RR# 1 Wallenstein Ont. N0B 2S0
Phone (519) 698-9864 Fax (519) 698-1087



Stamp

MTB MFG INC
4575 Powell Rd.
RR# 1 Wallenstein Ont.
N0B 2S0

Table of Contents

Introduction	4
Preparation for Use	4
Safety Rules	6
Connection Procedure	8
Trenching Procedure	8
Tips for first time users	9
Trouble Shooting	10
Maintenance	11
Chain Tension	12
Parts Break Down	12
Warranty	16
Mail back form	17

Warranty

This product is warranted to be free of defects in materials and workmanship under normal use and service, for a period of 12 months from the date of purchase, when operated and maintained in accordance with the Operating and Maintenance Instructions supplied with this unit. This warranty does not cover wear parts on chain nor any misuse or negligence.

Under no circumstances will the manufacturer be liable for any consequential damage or expense of any kind, including loss of profits. The manufacturer is under no circumstances liable for prime mover damage of any kind. The manufacturer is not liable for the maintenance of the product.

This warranty is extended only to the original purchaser. Warranty is void if repairs are attempted by anyone other than an Authorized Service Centre.

If a difficulty develops with the product, you should contact your nearest Authorized Repair Centre, or distributor. Only these locations are authorized to make repairs to the product or affect the replacement of defective parts, which will be done at no charge within a reasonable time after the receipt of the product. Units or parts should be returned at the customer's expense to the nearest repair location or Authorized Service Centre. Pack unit in a strong carton and pad tightly to avoid damage. Damage in-transit is not covered by warranty. Include original purchase receipt with any claim (keeping a copy for your files).

The distributor's liability under warranty is limited to repair of the product and/or replacement of parts and is given to the purchaser in lieu of all other remedies including incidental and consequential charges. There are no warranties, expressed or implied other than those specified herein. For the nearest Authorized Service Centre call the manufacturer.

Please note the following details and file this information in an appropriate place.

Model Number: _____ S/N: _____
Date of Purchase: _____
Owner's Name _____

Removing Skids or Block

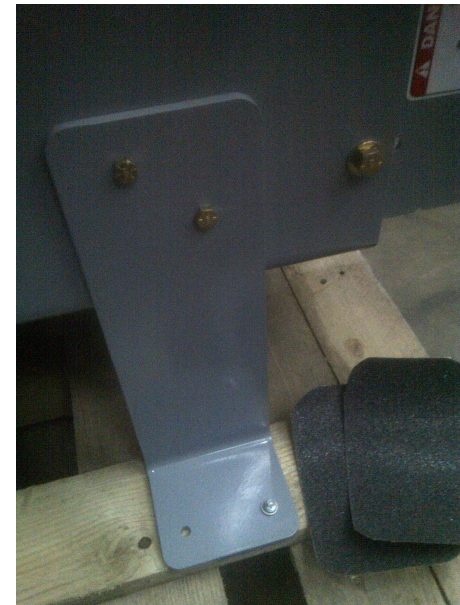
If Trencher is shipped on a skid it will be in a vertical position and must be lowered very carefully. Due to the weight of the chain the lifting device must be adjusted accordingly.

CAUTION: Use a lifting device to lower machine into operating position, failure to do so could result in serious injury or death.

Always keep the heavy weight of the machine in mind. Never position body in line of impact or in anyway underneath the machine.

None Slip Pads

Find none slip pads in owners manual tub and apply when shipping legs have been removed



Safety Rules

PLEASE REMEMBER SAFETY FIRST

Before Operating Machine: Read and understand all safety instructions included in this manual.

This service manual emphasizes the safety precautions necessary during the installation, operation, and maintenance of your BAUMALIGHT product. Each section of this manual has caution and warning messages. These messages are for your safety, and the safety of the equipment involved. If any of these cautions or warnings is not readily understood, seek clarification from qualified personnel before proceeding

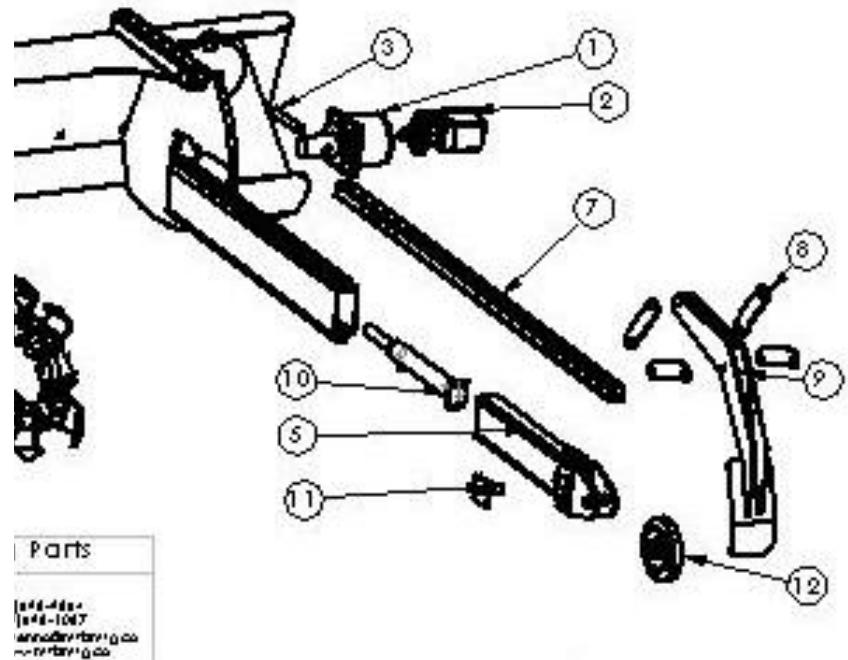
Make sure no one is standing in line or close to the rotating chain at anytime, and always be aware of all personnel working in the area around you.

Operator must wear protective face gear.
Keep all guards and deflectors in place

Remember; the cautions and warnings point out known conditions and situations that are potentially hazardous. Each installation may well create its own set of hazards.

Before any service work is done, disconnect all power

QTY.	PART NUMBER	DESCRIPTION	QTY.
	G2085	Planetary Gearbox	1
	H2072	Side Port Motor Spline Shaft	1
	P2035	.875 cross pin for sprocket	1
	T2007	Auger Assembly	1
	T2010	Idler Bracket Assembly	1
	C2013	50/50 Rock Teeth Chain	1
	T2014	Dirt Flap Arm	1
	T2086	Dirt Flap Pivot Plate	4
	T2009	Dirt Flap	1
	T2020	Trencher Cyl.	1
	T2012	Pressure Pin Assembly	1
	B2019	Idler Assembly	1
	C2019	Cup Tooth Chain	1



DATE 3/28/2007

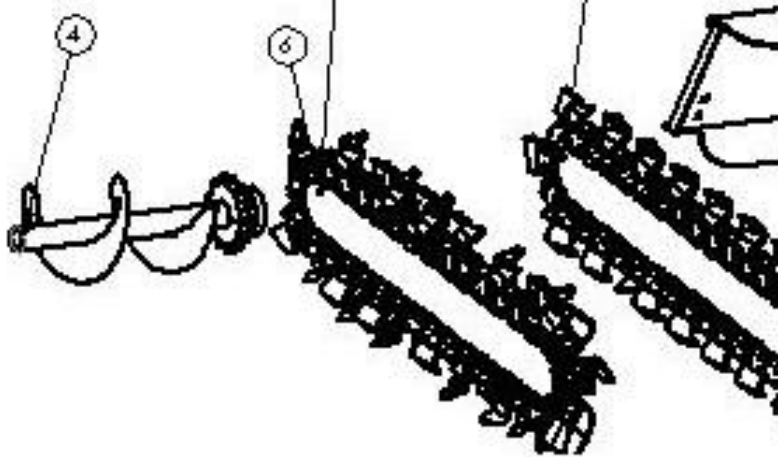
TN548 Trencher

Parts Breakdown

ITEM N
1
2
3
4
5
6
7
8
9
10
11
12
13

This is the standard chain shipped with all TN548 Units.

This is an optional chain only shipped if requested.



PROPRIETARY AND CONFIDENTIAL
 THE INFORMATION CONTAINED IN THIS
 DRAWING IS THE PROPERTY OF
 BAUMALIGHT, AND IS PROVIDED IN
 PART OR AS A WHOLE FOR YOUR
 USE ONLY. REPRODUCTION OR
 DISTRIBUTION OF THIS DRAWING
 IS PROHIBITED.

Please Specify Serial # When Ordering



WFE MFG. INC.
 4575 Powell Rd. Tel: 614
 8871 Wallersville Ln. Fax: 614
 OH 43082-9500 Email: info@wfe.com

sources and lock out all controls to prevent an unexpected start-up of the set driver. Place machine on a solid and level surface and insure machine is secured before any servicing is done. Precautions are necessary to prevent potential serious personal injury, or even death.

Always keep children away, never start up or operate with children present.

Do not operate when fatigued, or under the influence of alcohol or drugs.

When working on or around this unit, do not wear neckties, loose shirts, loose sleeves, or any other loose clothing that may become caught in moving parts.

Provide adequate ventilation for the prime mover, whether it is gasoline or diesel, do not operate in a closed building.

Excessive noise can lead to loss of hearing. When working around engines or a noisy environment use noise suppression equipment and wear protective devices as necessary. Keep your neighbors in mind when noise level is high.

Connection Procedure

Do not use with more than rated oil flow.

- 1: Read ALL Safety instructions
- 2: Check for loose teeth or any other loose parts
- 3: Make sure hydraulic lines are well out of pinch area.
- 4: Make sure there is sufficient visibility and maneuverability to move up to the Trencher.
- 5: Make sure all safety pins are secure in the correct position.
- 6: Plug in hydraulics securely

Trenching Procedure

- 1: First Read Connection Procedure & also read: **Not Enough Torque for Chain**
2. Drive Skid Steer into position where you want to start your trench and have something to line your self up with a tree or post just so you end up with a strait trench.
3. Make sure that you are familiar with controls of the skid steer before you start the chain.
4. Place unit so that the chain is a couple of inches above the ground, and so chain is slightly tilted up. Start hydraulic oil flow to start chain rotation.
5. After chain is rotating slowly lower attachment end to the ground. Then start tilting chain down at a steady slow pace

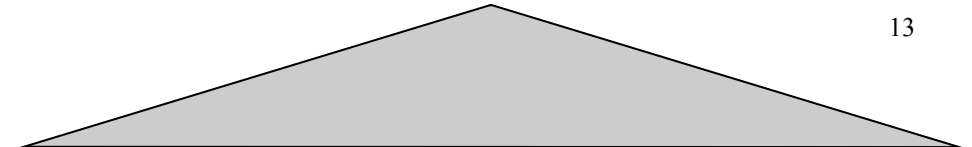
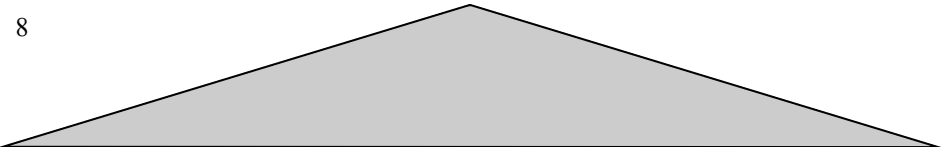
DATE 5/16/2007
B2019

ITEM NO.	PART NUMBER	DESCRIPTION	QTY.
1	B2016	Bearing insert	2
2	B2015	Bearing 1.25"	2
3	B2017	Idler pulley	1
4	P2037	Dirt washer	2
5	P2034	Idler pin	1
6	12060	Holder Washer	1

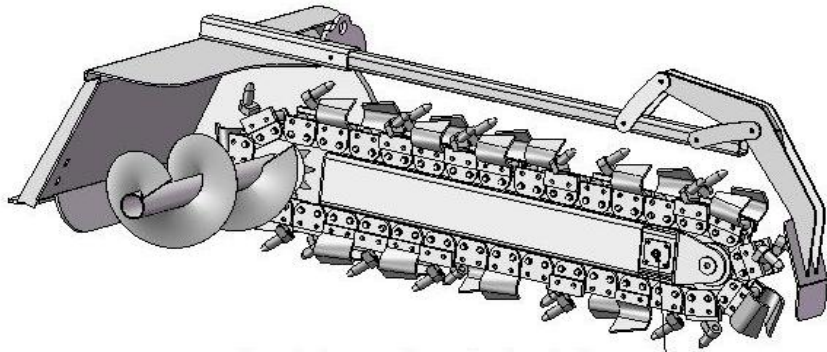
PROPRIETARY AND CONFIDENTIAL
THIS DRAWING OR CONTENTS IS THE
PROPERTY OF BAUMALIGHT. ANY REPRODUCTION OR
DISSEMINATION OF THIS DRAWING OR CONTENTS
WITHOUT THE WRITTEN PERMISSION OF BAUMALIGHT
IS PROHIBITED.

Please Specify Serial # When Ordering Parts

2075 Powell Rd. Tel: 815/673-7864
 1740 Industrial Ave. Tel: 815/673-7867
 Channahon, IL 61418 Fax: 815/673-7867
 Email: info@baumalight.com Web: www.baumalight.com



Chain Tension



- Insert Grease Here To Apply More Tension To Chain.
- Remove Cap On Opposite Side To Release Tension.

until at the desired depth then start moving skid steer.

6. If the chain stops turning, move skid steer ahead a few inches until chain starts to turn again, do not raise machine out of trench if you don't have to, because you will have to measure your trench again to ensure you are digging the same depth along the trench.

7. It is recommended that you measure the trench several times at the beginning of the digging process to ensure that the right depth is dug. Once you are very familiar with this machine this will not be as necessary.

8. When raising machine out of the trench always keep the chain rotating until completely raised above ground, if chain is not rotating it could catch a stone or a solid object as you are raising the machine out of the ground.

Tips for First Time Users

Once you have reached the desired depth that you wish to have, try to visually mark a spot on the adjustable arm to mark your depth this could be convenient for checking to make sure that you still have the desired depth without actually climbing out of the machine and measuring the depth.

Keep skid steer at full rev when trenching to insure you are getting maximum H.P. out of skid steer.

Trouble Shooting

CAUTION

BEFORE DOING ANY OF THE FOLLOWING STOP AND LOCKOUT CONTROLS ON SKID STEER.

Chain Is Not Rotating

Check to make sure there are no stones binding the chain any where.

Make sure chain has not come off track.

Check tension of chain (You should be able to lift chain 1.5in off of track.)

Make sure hydraulic hoses are connected properly.

Not Enough Torque for Chain

Check that the skid steer has correct amount of oil flow (12-22 G.P.M. 2500-3300psi).

Make sure oil filter is not restricting flow.

Check that the Hydraulic oil filter is not plugged.

Check if your skid steer has flow control that might be turned down.

Make sure oil level is full.

Have a pressure/flow test done.

Maintenance

Before any service work is done, disconnect all power sources and lock out all controls to prevent an unexpected start-up of the set driver. Place machine on a solid and level surface and insure machine is secured before any servicing is done. Precautions are necessary to prevent potential serious personal injury, or even death.

Grease all provided fittings every 6 hours of use.(TN548 has only 1 grease fitting)

Check cutting tips every 4 hours of use, replace one by one as need.

Check hydraulics for leaks.

Change oil in gearbox every 500 hours or every year of use (1/2 liter Synthetic 75/90 gear oil).

