

# TRENCH AXE

DRAW THE  
LINE

# BAUMALIGHT™



THE RIGHT  
EQUIPMENT

# TRENCH AXE



**TN 548**

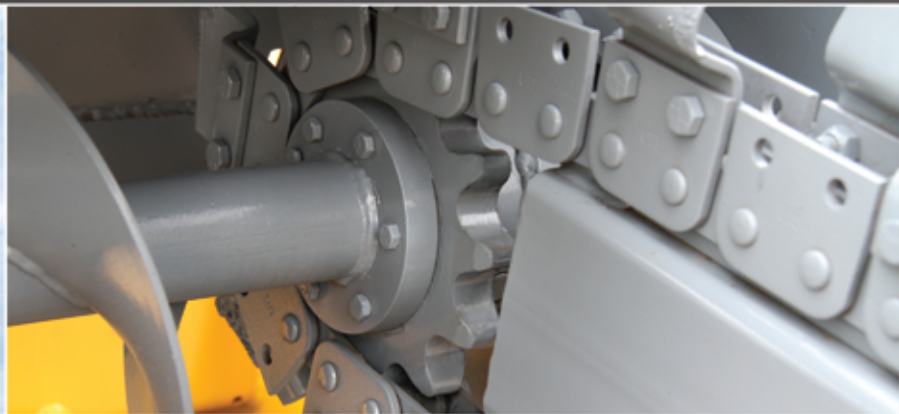
## DEEP COVER

If you are looking to hide and protect, we can help. Doesn't matter if its water, Gas, Power, or Communications we have you covered. The BaumaLight Trench Axe is designed to carve a safe haven for your cables and lines. Buried cables and lines are hidden from sight and protected, Trench Axe helps you get them there. The Trench Axe quickly and efficiently carves trenches from 6" to 10" wide (depending on chain option) and up to 4 feet deep. The side auger keeps the dirt out of the trenching action but close by for back filling.



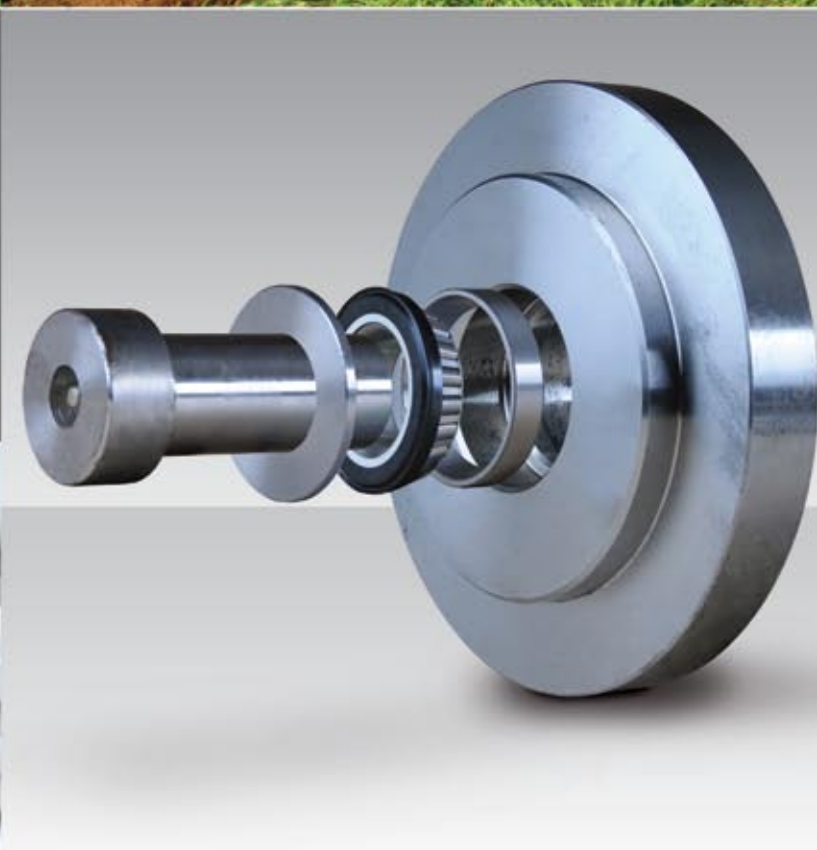
## No Crumbs Left Behind

The Trench Axe has a crumber scraper bar as standard equipment, this helps to scrape and sweep extra dirt and debris into the chain where it is lifted out of the trench. The heavy construction and hinged design mean that the scraper performs no matter what depth of trench you are digging.



## Sink Your Teeth In

The Hydraulically powered planetary gearbox provides the power to drive the teeth up to 4 feet deep, while the large drive gear prevents the chain from getting clogged. The auger keeps the dirt clear of the trench while digging but close by for easier back filling.



## Let Your Nose Run Free

Trench Axe's heavy duty nose is precision machined from a piece of solid steel. It runs freely on dual tapered roller bearings to deal with the extreme forces of trenching.

Dirt is the enemy of all bearings. A precision machined washer protects the bearings from rocks and dirt. This initial barricade is reinforced by the rubber seal on the bearings, finishing the job is the easily accessible grease fitting which keeps the bearings lubricated and protected from moisture and keeps our nose running freely.

## Pump Up the Tension

Adjusting the chain tension with a couple of pumps. The grease cylinder tensioner allows you to adjust the tension of the chain quickly with only a grease gun. By applying grease to an internal cylinder the roller nose is pushed forward taking the slack out of the chain. What could be a long frustrating process is now a few quick pumps.



## Chain Options

The included chain is equipped with Hardened and reinforced cup style cutting teeth in a 6 inch cutting width. Optional and replacement chains are available in 6", 8" and 10" widths. Depending on your trenching needs a bullet style tooth is also available for rocky soil conditions. Contact us for help picking your chain size and teeth style and configuration.

## Specifications



Trench Depth	48"
Trench Width	6" to 10"
Weight	1175 Lbs.
L x W x H	84" x 53" x 27"
Chain Speed*	71' / Min
Horse Power	40 HP to 100 HP
Min / Max GPM	12 GPM to 25 GPM

\* High Torque / Low Speed



## Mounting Options

### Skidsteer or 3 Point Hitch

The Trench Axe is mountable on either a standard skidsteer plate or with an optional 3 point hitch mount. The optional 3 point hitch mount provides down pressure and angle/depth control. Kits are also available for tractors with only one set of external hydraulic connections.

## OTHER PRODUCTS

# THE RIGHT EQUIPMENT



AUGER DRIVES

GENERATORS

MULCHERS

STUMP GRINDERS

TREE SPADES



Manufactured by: MTB MFG. INC.  
4575 Powell Rd. Wallenstein, ON. Canada, N0B 2S0  
1.866.820.7603 | T. 519.698.9864 | F. 519.698.1087 | E. sales@baumalight.com

[www.baumalight.com](http://www.baumalight.com)

Authorized Dealer