

# BRUSH FIRE

PUT SOME  
TEETH INTO IT



# BAUMALIGHT™



THE RIGHT  
EQUIPMENT



# MINI-EXCAVATOR

## STRIKE FORCE

Precision Strike Force is the term that best describes the MX530 this excavator version of the Brush Fire brings together power and precise control. Search and destroy, paired with an excavator an operator can mulch around objects reducing casualties of innocent bystanding trees while removing the cumbersome brush. Excavators can also go where

tractors and skid steers fear to tread. This gives you greater access to areas that have had to be cleared by hand in the past. Clearing stubborn brush from steep ditches from the comfort and safety of the level ground. Reaching over and around objects is no problem with the proven brush clearing appetite of Brush Fire.



### Match GPM & PSI Results to a Model Model Identifies Motor Option

Model	Rec. GPM	Max. GPM*	Max. PSI	Req. Case Drain	Hydraulic Couplers	Shipping Weight	Motor Options
<b>MX 530</b>	12-20	20 GPM	3000 PSI	No	Not Supplied	1036 LBS	<b>A450</b>
	12-24	24 GPM	3000 PSI	Yes	Not Supplied	1050 LBS	<b>B550</b>
	16-25	30 GPM	4500 PSI	Yes	Not Supplied	1120 LBS	<b>C530</b>
	19-30	35 GPM	4500 PSI	Yes	Not Supplied	1120 LBS	<b>C540</b>
	25-35	40 GPM	4500 PSI	Yes	Not Supplied	1120 LBS	<b>C550</b>

### Motor Options = Maximum Brush Cutting Sizes

	Hydraulics	Operation	12 GPM	15 GPM	18 GPM	20 GPM	21 GPM
<b>A450</b>	2500 PSI 3000 PSI	Steady Forward Steady Forward	.75" Brush 1" Brush	1" Brush 1.25" Brush	1.25" Brush 1.5" Brush	1.5" Brush 2" Brush	<b>WARNING*</b> <b>WARNING*</b>
		<b>RPM</b>	832 RPM	924 RPM	1088 RPM	1215 RPM	
<b>B550</b>	2500 PSI 3000 PSI	Steady Forward Steady Forward	.75" Brush 1" Brush	1.5" Brush 2" Brush	2" Brush 2.25" Brush	2.25" Brush 2.5" Brush	<b>WARNING*</b> <b>WARNING*</b>
		<b>RPM</b>	693 RPM	1201 RPM	1324 RPM	1478 RPM	
<b>C530</b>	2500 PSI 3000 PSI 3500 PSI 4000 PSI	Steady Forward Steady Forward Steady Forward Steady Forward	1" Brush 1.5" Brush 2" Brush 2.5" Brush	1.5" Brush 2" Brush 2.5" Brush 3" Brush	2" Brush 2.5" Brush 3" Brush 3.5" Brush	2.5" Brush 3" Brush 3.5" Brush 4" Brush	<b>WARNING*</b> <b>WARNING*</b> <b>WARNING*</b> <b>WARNING*</b>
		<b>RPM</b>	1100 RPM	1350 RPM	1500 RPM	1800 RPM	
<b>C540</b>	3000 PSI 3500 PSI 4000 PSI	Steady Forward Steady Forward Steady Forward	2" Brush 2.5" Brush 3" Brush	3" Brush 3.5" Brush 4" Brush	3.5" Brush 4" Brush 4.5" Brush	4" Brush 4.5" Brush 5" Brush	<b>WARNING*</b> <b>WARNING*</b> <b>WARNING*</b>
		<b>RPM</b>	1050 RPM	1500 RPM	1700 RPM	1800 RPM	
<b>C550</b>	3000 PSI 3500 PSI 4000 PSI	Steady Forward Steady Forward Steady Forward	3" Brush 3.5" Brush 4" Brush	3.5" Brush 4" Brush 4.5" Brush	4" Brush 4.5" Brush 5" Brush	4.5" Brush 5" Brush 5.5" Brush 6" Brush	<b>WARNING*</b> <b>WARNING*</b> <b>WARNING*</b> <b>WARNING*</b>
		<b>RPM</b>	1340 RPM	1500 RPM	1600 RPM	1875 RPM	2140 RPM

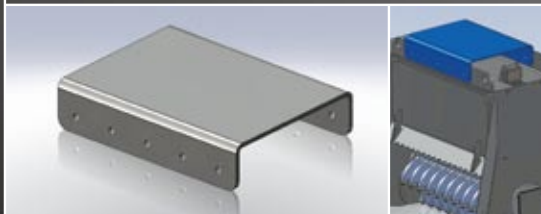
\*NOTICE: This value must never be exceeded or warranty is voided. RPM causes equipment damage.



### Specifications

Model No.	MX 530
Path Width	40"
Rotor Width	30"
Maximum Engine HP	Check flow and psi
Minimum Engine HP	15 Hp
Maximum Brush Size	7"
Cutting Depth	1.5" Above to 1" Below Grade
Number of Cutters	64
Slashes Per Second	2400 - 4000
Hitch Type	Excavator
Hitch Size	Universal
System Protection	Built in relief
Shipping Size (LxWxH)	44" x 44" x 48"
Unit Weight	1036 Lbs.

### Mounting Options



Weld any existing mount to the BAUMALIGHT flat plate, providing countless options, value and economy. Contact your nearest authorized BAUMALIGHT dealer for specific information about all other mounting systems specific to your machine.



Authorized Dealer

Manufactured by: MTB MFG. INC.  
4575 Powell Rd. Wallenstein, ON. Canada, N0B 2S0  
1.866.820.7603 | T. 519.698.9864 | F. 519.698.1087 | E. sales@baumalight.com

[www.baumalight.com](http://www.baumalight.com)